A decorative border of intricate, flowing calligraphic lines in a light cream or gold color, framing the central text area. The lines are dense and ornate, with many loops and flourishes.

the greatest name in pens

Parker

The Parker Pen Company

JANESVILLE - WISCONSIN - U. S. A.

To Parker Dealers:

In the 82 years our company has been producing fountain pens we have never offered a better and finer range than is shown on the pages of this catalog.

Every item was designed with two objectives in mind: first, that it must be tops in value, precision engineering, and in performance; second, that its beauty of line and color and packaging must maintain Parker Pen's position as America's No. 1 Gift.

If you have not already done so I hope sometime we may have the pleasure of having you visit our plant so that we can show you our particular precision technique in manufacturing writing instruments, and by no means least, the research laboratories that are constantly at work to develop better materials, better methods and structures.

In the meantime will you please let this catalog be your guide when you order pens, pencils, desk sets, and their accessories! It is a pleasure to send it to you and we look forward to continuing to serve you.

Very truly yours,

THE PARKER PEN COMPANY



President

Kenneth Parker

o

THE PARKER PEN COMPANY



the greatest name in pens

Parker

catalog no. 5000



CHALLENGER • PARKETTE ZEPHYR • PARKER WRITEFINE • PARKER DESK SETS • PARKER QUINK • DUOFOLD • PARKER VACUMATIC • PARKER TWO-FOR-LIFE • PARKER COMPANIONS • PARKER IMPERIAL • PARKER



Geo. S. PARKER

1873 - 1957



KENNETH PARKER

1901 -

T

HE greatest dominance of the Parker Pen Company is the result of steady progress over a period of fifty two years . . . a record of achievement accrued by the major improvements and developments in writing instrument craftsmanship.

In 1888 Geo. S. Parker "shot an inspired arrow into the air" that marked the real beginning of the pen business . . . beginnings were humble, but growth was phenomenal.

The "Lucky Curve" feed was introduced in 1894—the first of many forward steps each of which in turn have revealed new profit opportunities. In 1904 Mr. Parker presented his self-filling pen, followed closely during the next decade by the Spearhead feed, Safety-and cap, Press button filler, and the improved Parker pencil.

The year 1923 is indelibly identified as the introduction year of Parker Duobold—the brightly colored pen

that swept the nation. Then followed the Parker non-bleedable barrel streamlined balanced shape and Parker Quink—the major ink development of all time.

For decades pen craftsmen had been petting "plunger" and "piston" filling mechanisms in an effort to get away from the drudgery of lever-type pens. Not until 1932, however, was a filling mechanism actually perfected that eliminated old-time sacs and levers. In that year the Parker Pen Company introduced the Parker Vacumatic, and started pen dealers on the way to ever greater goals.

Today, as throughout its history, Parker merchandise leads the march of progress. In presenting this catalog Parker brings to pen retailers a brilliant array of dynamic merchandise imbued with the highest degree of reliability and attractiveness.



Above: The large modern Main Plant of the Parker Pen Company in Providence, Rhode Island—its world headquarters for the development and production of the finest writing instruments in the world.



Lower right: The headquarters in London, England. Lower right: Our office and factory in Toronto, Canada.

ONLY Parker CAN OFFER THE VACUMATIC

AND ONLY A PARKER OWNER
CAN ENJOY THE MANY EXCLUSIVE
FEATURES OF THIS INCREDIBLE PEN



Full
TELEVISION
Ink
Supply



Pen is filled by the expansion and contraction of a special sealing Diaphragm. This patented invention is shown after rubber ink sac has been filled, vacuum pump, and air lock, found on ordinary and all other pens.



Over 250 useless pens have been invented, but only one successful pen has been entirely successful—Parker Vacumatic. Despite dire predictions by rival pen makers when it was introduced in 1932, this pen has now assumed dominance of the pen business. It eliminates the rubber ink sac, lever filler and piston pump. It has been as completely successful that several imitations (some based on ideas similar to those patented as early as 1900) have been attempted, but only Parker can make the Vacumatic. Parker Vacumatic is so foolproof that it is Guaranteed for Life.

WHY PARKER VACUMATIC IS THE ONLY PEN OF ITS KIND IN THE WORLD

1. Patented Diaphragm Filler—When plunger is pressed by the finger the diaphragm distends, forcing air out of the pen barrel. When plunger is released ink rushes in and fills the vacuum so created. Six or seven thrusts and it's filled. All moving metal parts are sealed away from ink corrosion. Unlike useless piston pump or plunger mechanisms, there is no packing, no valves or washers to corrode, oxidize, wear, leak, or bind.
2. Patented Full Television Ink Supply—tells when to refill, hoses to advance if necessary.
3. Laminated Panel Styling—absolutely exclusive in design and manufacture.
4. Top-of-Cap Arrow Clip—remains low in pocket, more handsome in appearance.

THE BLUE DIAMOND MEANS Guaranteed for Life

This Guarantee accompanies Parker Vacumatic pens selling at (U. S.) \$8.75 and up.

*Pens marked with the Blue Diamond are guaranteed for the life of the owner against everything except loss and intentional damage, subject only to a charge of (U. S.) \$0.55 for postage, insurance, and handling, provided complete pen is returned for service.

PARKER POINT SELECTION CHART

Here is your choice of sixteen different styles of pen points for the Vacumatic pen. Sales records actually show, however, that 95% of all pen buyers choose one of the six points shown below in the yellow tinted section. The remaining ten points are made for special point buyers.

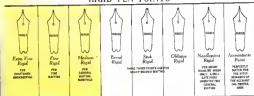
All Parker pen points are 14K Gold tipped with high-grade polished Carburidum, twice as costly as ordinary iridium. The points of the Guaranteed for Life Parker Vacumatics are also coated with Platinum.



INDEX TO THIS CATALOG

Challenger Pens, Pencils, Sets	17
Comparisons	5
Debatante Vacumatic	15
Desk Sets	25-34
Desk Set Index	34
Desk Set Pens	22
Desk Set Sockets	23
Dunfield Pens, Pencils, Sets	16
Guarantee for Life	4
Imperial	7
Imperial Convert	5
Imperial Debatante	7
Imperial Debatante Signet	6
Imperial Ensign	5
Imperial Lady Signet	6
Imperial Major Signet	6
Imperial Princess	5
Imperial Signet	6
Junior Vacumatic	14
Leads and Erasers	19
Major Vacumatic	12
Niditons	3
Parkette Zephyr	17
Point Selection Chart	4
Quink	20-21
Sealomatic Socket Diagram	22
Senior Maxima Vacumatic	10
Slender Maxima Vacumatic	11
Sub-Deb Vacumatic	15
Two-for-Life	9
Twasdale	9
Vacumatic Features	5
Vacumatic Pens, Pencils, Sets	10-15
Writefile Pencils	18-19

RIGID PEN POINTS



FLEXIBLE PEN POINTS



Parker

IMPERIAL Coronet



IMPERIAL Ensign



IMPERIAL Princess



The most perfect combination of suave styling and brilliant writing performance ever available in writing instruments. A lifelong treasure with a priceless future. Features all of the famous Parker Vacuumatic refinements. Presented in beautiful brown leather gift case.

Imperial Coronet—14K combination yellow and green gold barrel and cap. Pen (No. 4032) \$100; Pencil (No. 4532) \$30. Set (No. 4032/4532) \$150.

Imperial Ensign—14K combination yellow and green gold cap. Lacinated Jet barrel. Pen (No. 4031) \$50; Pencil (No. 4531) \$30. Set (No. 4031/4531) \$80.

Imperial Princess—14K combination yellow and green gold cap. Lacinated Jet barrel. Pen (No. 4030) \$45; Pencil (No. 4530) \$25; Set (No. 4030/4530) \$70.



Parker



IMPERIAL Major Signet

IMPERIAL Lady Signet

Magnificently styled gift ensembles. The traditional beauty of the laminated design is further supplemented by wide 14K Gold bands and 14K Gold clips. The finest pen performance ever attained is assured by the precision Parker Vaco-matic refinements. Presented in new toolled leather pencil case.

	Pen	Pencil	Set
Imperial Major Signet	\$25.00	\$11.50	\$37.50
W ^m Laminated Jet	4045	4515	4015/4515
Band Golden Pearl	4035	4525	4025/4525
Imperial Lady Signet	\$20.00	\$10.00	\$30.00
W ^m Laminated Jet	4011	4511	4011/4511
Band Golden Pearl	4021	4521	4021/4521
Imperial Signet	\$20.00	\$12.50	\$32.50
W ^m Laminated Jet	4012	4512	4012/4512
Band Golden Pearl	4022	4522	4022/4522
Imperial Deluxe Signet	\$17.50	\$10.00	\$27.50
W ^m Laminated Jet	4010	4510	4010/4510
Band Golden Pearl	4020	4520	4020/4520





IMPERIAL

IMPERIAL *Debutante*

Parker Imperial appeals to people who appreciate exceptional beauty and expert craftsmanship in writing instruments. The 14K gold-plated caps are delicately tooled and contrast strikingly with the Laminated barrels. Traditional Parker Vernacular performance features assure trouble-free writing satisfaction. Presented in the new leather-gold gift case.

	Pen	Penel	Set
Imperial	\$13.75	\$ 6.00	\$19.75
Laminated Jet	1350	1810	1346/1816
Golden Pearl	1326	1826	1326/1826
Imperial Debutante	\$12.75	\$ 5.00	\$17.75
Laminated Jet	1814	1814	1814/1814
Golden Pearl	1824	1824	1824/1824





COMPANIONS

The most dramatic gift idea in years... two perfectly matched ensembles... companions writing instruments for birds and grove, mother and father, sweethearts, and for anniversaries.

Imperial and Imperial Debutante Sets (Illustrated)

Laminated Jet	1316/1836 & 1314/1814	\$ 37.50
Golden Pearl	1326/1836 & 1324/1824	37.50

Imperial Emory and Process Sets

	4031/4531 & 4030/4530	150.00
--	-----------------------	--------

Imperial Major Signet and Lady Signet Sets

Laminated Jet	4015/4515 & 4011/4511	67.50
Golden Pearl	4025/4525 & 4021/4521	67.50

Imperial Signet and Debutante Signet Sets

Laminated Jet	4012/4512 & 4010/4510	60.00
Golden Pearl	4022/4522 & 4020/4520	60.00

See pages 5, 6, and 7 for descriptions of above merchandise.



This smart gift look applies the occasion and becomes a valuable good buy through a simple ad.



TWO for LIFE

TWOSOME

A pen for the bride . . . a pen for the groom . . . Two-for-Life. Lovely matching pens brought together in the most appropriate of gifts. You can present a Two-for-Life ensemble with anticipation . . . for it will be received with delight.

Two-for-Life	Number of Pens	List Price
Laminated Jet	E216 and E214	\$26.50
Golden Pearl	E220 and E224	26.50
Laminated Jet	10 and 14	17.50
Golden Pearl	20 and 24	17.50
Silver Pearl	30 and 34	17.50
Emerald Pearl	40 and 44	17.50
Emerald Pearl	50 and 54	17.50

See pages 2, 12 and 13 for descriptions of silver pens.

Yosemite	Number of Pens	List Price
Laminated Jet	119 and 118	10.00
Golden Pearl	121 and 120	10.00
Silver Pearl	131 and 130	10.00
Emerald Pearl	139 and 138	10.00

See pages 14 and 15 for descriptions of silver pens.



PARKER SENIOR MAXIMA

Vacumatic

ff

The famous, patented Vacumatic Pen is self-filling and automatic, yet is well styled and well balanced. Its nib is of the finest construction, its operation extending into many, its smooth ink flow gives a unique character and is not made elsewhere and the Vacumatic is the standard for fountain pens. The set provides the same Vacumatic pen, a selected colored Vacumatic length paper streamer, 20" long, 4" wide, and a vacuum for the same period and gift box, \$19.95. (See page 104)

Full
TELEVISION
Ink
Supply.



SET #15

PEN #10

PENCIL #5



List Price

Lustrated #1

Golden Pearl

Silver Pearl

Burgundy Pearl

Emerald Pearl

Set #	Pen	Pencil
10	\$10.00	\$1.00
20	\$12.00	\$1.00
30	\$14.00	\$1.00
40	\$16.00	\$1.00
50	\$18.00	\$1.00
60	\$20.00	\$1.00

GUARANTEED FOR LIFE BY THE BLUE DIAMOND

PARKER MAJOR Vacumatic

Parker's most popular Guaranteed-for-Life pen. Typical, sturdy Parker construction and the easy refinements that have made Parker Vacumatic the greatest name in pens. Medium length and 26th, exact laminated cap and barrel, Full Television ink supply, polished Chromalox tip on 54K Gold, Platinae plated nib. Now laminated Parker pencil featuring Waterline Leads for better pencil performance. Set presented in beautiful new Parker gift case.

Full
TELEVISION
Ink
Supply.



SET #1270

FEN #875 PENCIL #4



	Pen	Pencil	Set
List Price	\$ 5.75	\$4.00	\$12.75
Laminated Jet	35	316	16/316
Golden Pearl	36	300	30/300
Silver Pearl	37	336	30/336
Burgundy Pearl	38	346	45/346
Emerald Pearl	39	356	36/356

GUARANTEED FOR LIFE  BY THE BLUE DIAMOND

PARKER DEBUTANTE Vacumatic

PF

Softer, slimmer, especially styled for the feminine hand. Nevertheless, this beautiful ladies' pen includes all of the exclusive Parker features. The diaphragm filter allows ample ink capacity even for a pen of this small size. Also features Television ink supply, platinum plated, Oxidation tipped 18K Gold point, top of cap screw clip and beautiful laminated construction. Parker pens fit to match to employ the new extra long super strong Writefast Leads.

Full
TELEVISION
Ink
Supply



SET '12"

PEN #875 PENCIL #4



Set Price

Laminated Set
Golden Pearl
Silver Pearl
Burgundy Pearl
Emerald Pearl

Pen	Pencil	Set
\$ 6.75	\$4.00	\$12.75
10	510	14.754
24	524	24.704
34	534	34.514
44	544	44.544
54	554	54.554

PARKER JUNIOR Vacumatic

The last of pen and nib technology—new styled also in the Junior Parker Vacumatic construction. Lightly built, strong and sturdy features a fully guaranteed one long dependable performance. The outstanding proof of the remarkable Parker Vacumatic is the superior fountain and fountain pen as a whole. The only pen to be used in the world. Learn more about it.

Full
TELEVISION
Ink
Supply.



SET \$7.95

PEN \$5.95 PENCIL \$7.95



List Price
Lacquered Set
Golden \$7.95
Silver \$7.95
Emerald \$7.95

Set	Pen	Pencil
\$7.95	\$5.95	\$7.95
\$11.90	\$11.90	\$11.90
\$12.90	\$12.90	\$12.90
\$13.90	\$13.90	\$13.90
\$15.90	\$15.90	\$15.90

PARKER SUB-DEB Vacumatic

Parker's Sub-Deb Vacumatic pen is now styled in the same laminated construction as the Parker DelaCorte. Here is the perfect pen for the girl graduate or for any woman who desires a dependable, gracefully designed writing instrument. Includes all of the famous Vacumatic refinements and is similar to the Junior Vacumatic, except that the barrel and cap are smaller and are diamond-cut. The matching pencil uses the new WhiteLine Leads, and the set is contained in the popular Teacup gift box.

Full
TELEVISION
Ink
Supply.



118

120

126

125

128

SET \$8.00

PEN \$5

PENCIL \$3.00



Leads:

Guaranteed Ink

Golden Lead

Silver Lead

Emerald Lead

	100	100	100
118	\$5.75	\$5.50	\$5.50
120	\$6.00	\$5.75	\$5.75
126	\$6.25	\$6.00	\$6.00
125	\$6.50	\$6.25	\$6.25
128	\$6.75	\$6.50	\$6.50

GUARANTEED UNDISPUTABLY PERFECT

DUOFOLD
JUNIOR
PEN



DUOFOLD
SUB-DEB
PEN



DUOFOLD
JUNIOR
PENCIL



PARKER Duofold

Parker Duofold is the pen that revolutionized the pen industry and brought to the world a new conception of pen styling and performance. It has kept pace with the years and now we present Parker Duofold in a completely new, appealing style... the beautiful Ladbroke design. While the pen in either of the models illustrated costs \$5.95, the set, including the fine Duofold pencil using Writeline Leads is obtainable at the incredibly low price of \$5.95. Presented in a new known leather-effect gift box of unusual richness.



PARKER DUOFOLD NOW INCLUDES THE FINEST SACLESS FILLING MECHANISM EVER DEVELOPED—THE FLEXIBLE RUBBER DIAPHRAGM FILLING UNIT

Other refinements incorporated in this unusual value are the Full Vision ink supply that tells you when to refill, an Constitution-tipped 14K Gold nib, non-breakable barrel and cap, and top-of-cap clip for easy placement in the pocket.

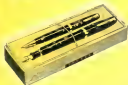
DUOFOLD JUNIOR

	Pen	Pencil	Set
List Price	\$ 5.95	\$2.50	\$5.00
Black	215	715	315/715
Blue	225	725	325/725
Maroon	235	735	335/735
Green	245	745	345/745

DUOFOLD SUB-DEB

	Pen	Pencil	Set
List Price	\$ 5.95	\$2.50	\$5.00
Black	214	714	314/714
Blue	224	724	324/724
Maroon	234	734	334/734
Green	244	744	344/744

PARKER Challenger

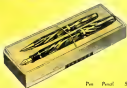


	Standard Pen	Standard Pencil	Standard Set	Standard Pen	Standard Set
List Price	\$2.75	\$2.75	\$5.00	\$3.95	\$5.95
Black	259	257	757	259 757	257 757
Burgundy	259	277	777	259 777	277 777
Grey	289	287	787	289 787	287 787
Green	299	297	797	299 797	297 797
Blue	369	367	767	369 767	367 767



Easily the most appealing buy in the low-priced field. Non-removable barrel and cap. Ornamental tapered Gold point, press-button, leverless filling mechanism. Visconti Ink Supply and smartly designed clip. Set is only \$5.95; pen is \$2.75; pencil separately is \$2.

PARKETTE Zephyr



	Pen	Pencil	Set
List Price	\$1.95	\$1.90	\$2.95
Blue	305	805	305/805
Black	315	815	315/815
Brown	325	825	325/825
Grey	335	835	335/835



Here's the ideal pen for school use. It will give long dependable writing service. Appealingly styled, including Visconti Ink Supply, Ornate ribbon-tipped point, and top-of-cap clip for low pocket placement.

PARKER
Writefine
PENCILS

THE HIGHEST DEVELOPMENT
IN PENCIL PERFORMANCE

Here is the pencil that has been needed for a long time. It employs the decade-long, super strength Writefine Leads, therefore requiring less refilling and writing a finer line . . . but more than that, it has the extra long eraser that can be turned out just like lead, so it is used, thus eliminating the annoyance of a worn out, useless eraser and keeping the eraser always handy and ready for use. This pencil is more handsomely styled, too. It is slender, well-proportioned and the threading on the lower barrel provides a more firm grip and adds to the appearance as well.



EXTRA-LONG ERASER CAN BE TURNED OUT AS USED



904

905

906

907

908



THREADED BARREL
Precision Fit—Gap



EXTRA LONG LEADS
Twice as Strong—Half as Thick

Black Witefast Pencil	904	\$1.00
Red Witefast Pencil	905	1.00
Blue Witefast Pencil	906	1.00
Scarlet Blue Witefast Pencil	902	1.50
Gold Sleeve Witefast Pencil	901	2.50

Double-length, super-strength Witefast Leads are now featured in all pencils in this catalog, including Vaucaresse pencils.

PARKER LEADS AND ERASERS



- A. Witefast Leads F, BB, B, 2B, 3B, 4B. Fit all new Vaucaresse and Doublet new Challenges, Polymo, Scepter and Parker Witefast Pencils. Black, 15 leads to pkg. 40¢, Red, Blue, Indelible, 5 leads to pkg. 1.50. 25 to pkg. 2.00.
- B. Parker Leads BB, B, F, 3B, 4B, 5B, 6B. Fit all old-style pencils. Black, 15 leads to pkg. 1.50. Red, Blue, Green, Indelible, 5 leads to pkg. 1.50.
- C. Eraser No. 1. 1/2" dia. Fits Vaucaresse Doublet Challenge, Polymo, Scepter pencils.
- D. Eraser No. W, 1/2" dia. Fits Witefast Pencil illustrated on this page.

PARKER *Quink*



*The Finest
Writing Fluid
Ever Developed*

HERE'S WHY PARKER QUINK IS BETTER

Quick strating . . . quick drying . . . non-clogging . . . possessing every desirable quality possible to attain in a writing fluid! It is the ink that does what no other ink can do. Chemically constituted so as to clean a pen as it writes, digest gum and sediment left in the pen by inferior inks. Inures smooth, even flow, free from stopping or sudden flooding.

Parker Permanent Quink is ideal for records and documents and has been officially adopted by many organizations and individuals for this purpose. Once used, it is as permanent as the paper

itself. Parker colored Quinks are the only colored writing fluids that assure permanence against light and age.

Parker Washable Quink can be safely used in school and in the home because it washes out completely without trace of a stain if spilled on hands, clothing, or rugs.

Years of development and perfection have given Parker Quink a combination of invaluable qualities that are obtainable in no other writing fluid . . . it's chemically and functionally perfect.

SEVEN PERMANENT COLORS—Violet, Red, Green, Brown, Black, Royal Blue and Blue-Black. For office records, checks and all permanent documents. PERMANENT QUINK remains vividly legible as long as the paper lasts. It won't fade or wash out.



TWO WASHABLE COLORS—Black and Blue. The SAFE ink for home and school use. It washes out easily from hands, clothes, rugs, etc., when soap and water are used promptly, leaving no trace.

RICH-BODIED and BRILLIANT

Never Watery, Never Gummy



FIVE CONVENIENT SIZES:

SIZE AND PACKING	LIST PRICE PER BOTTLE	LIST PRICE PER GALLON	NO. BOTTLES PER CARTON	DROWING WT. GALLON LBS.
2 oz.	\$ 2.00	\$ 24.00	30	17
4 oz.	3.25	39.00	24	10
Pint (16 oz.)	9.00	108.00	6	15
Quart (32 oz.)	15.00	180.00	6	24
Gallon	54.00	648.00	1	15

PARKER QUINK EQUALS OR SURPASSES THE UNITED STATES GOVERNMENT SPECIFICATIONS IN THESE EIGHT RESPECTS

Extensive laboratory tests definitely prove that Parker Permanent Quink in Royal Blue, Black, and Blue-Black equals or surpasses United States Government Specifications in these eight important ways:

- * Parker Quink resists water—even after immersion it remains firm and legible.
- * Parker Quink does not clog—it is not gummy and has no sediment, even in the colors.
- * Parker Quink has the correct flowing properties—it brings out the full capabilities of your pen.
- * Parker Quink is non-staining—does not leave deterring solids or mold.
- * Parker Quink is non-fading—is not rendered illegible by subjection to light as an inferior ink.
- * Parker Quink is quick drying—no unnecessary waiting or smudging.
- * Parker Quink is non-corrosive—does not attack the metal parts of your writing instrument.
- * Parker Quink is non-deposit-forming—does not leave accumulated sediment in the bottle or in the pen.

Parker

DESK SETS

**GUARANTEED
FOR LIFE**

as identified
by the
**BLUE
DIAMOND
MARK**
on the band



Desk Pen
No. 1

Desk Pen
No. 2

Desk Pen
No. 3

Parker presents the most beautifully designed desk set for a lifetime—every model will add dignity and prestige to your office or home. There are new combinations of materials never before utilized—each one luxurious in style. Parker desk pens are identical in quality to the finest pen lines you see—this superior Sealomatic market assures the writer that the pen is always ready for use—never dry or clogged with ink. These sets are the perfect choice for gifts to business leaders, group leaders, ministers, teachers, and executives. There is no gift more suitable.

Pen No. 1—The Major Vicomatic desk pen.
See page 12.

Pen No. 2—The Junior Vicomatic desk pen.
See page 11.

Pen No. 3—The Challenge desk pen.
See page 17.

PARKER SEALOMATIC SOCKET

©1958 THE PARKER PEN COMPANY, PITTSBURGH, PA.



Cross section of Sealomatic Socket showing how automatic seal is formed when pen is properly oriented and how pen is retracted if seal leaks out.



LLX



Mark Chalkin's pen nibs for 1100 type desk pens



CCW



CCX

LLX Truly the most handsome desk accessories set with solid pieces of ultra-tempered steel developed for use on the desk of the busy executive. (1) The highly polished walnut base is included a full length pencil groove of finished brass (2) A fine 9 day Astor clock set in a walnut receptacle. Two 48" Baccarat lamps provide illumination around the entire desk without any distracting effect and have a beautiful two tone bronze shade. Size 17" deep x 40" long x 10" high. With two Viceroy's. Guaranteed for Life Price—\$150.00.

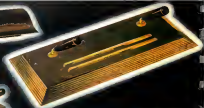
CCW A beautifully styled Bureau Desk base with an 8 day Astor clock mounted on a luxurious Onyx receptacle. Pencil groove in front of clock. Size 17" x 39" x 6 1/2". With two Viceroy's. Guaranteed for Life Price—\$125.00.

CCV Similar to above desk set except base made of Green Onyx—\$125.00.

CCX A new adaptation of a two tone bronze base with an 8 day Astor clock mounted on a luxury receptacle. Size 17" x 37" x 6 1/2". With two Viceroy's. Guaranteed for Life Price—\$100.00.



LLU



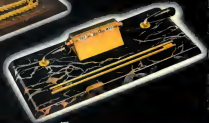
NNC



NFC



CCY



NNE

LLU An extremely handsome two-tone bronze lacquer lamp with a large walnut base. Brass pencil groove. Size 7" x 10". With two Pens No. 1-845.00 with two pens No. 2-842.50 with two Pens No. 3-840.00.

CCY Interesting Nautical Clock base, correctly styled to its theme. Base and clock frame are of highly polished mahogany. Top quality General Electric clock. Size 6" x 5 1/2" x 6 1/2". With two Pens No. 1-840.00, with two Pens No. 2-837.50 with two Pens No. 3-835.00.

NNC Beautiful two-tone bronze base with contrasting pencil groove.

Two Pens No. 1-843.00 with two Pens No. 2-842.50 with two Pens No. 3-840.00.

NFC Elegant Cherry Drive base with contrasting 30 blades as well as a finished bronze receptacle. Size 7" x 10" x 2 1/2". With two Pens No. 1-855.00 with two Pens No. 2-852.50 with two Pens No. 3-850.00.

NNE Selected Italian Marble base with brushed bronze costume calendar and modern double bar pencil groove. Size 6" x 12" x 2 1/2". With two Pens No. 1-875.00 with two Pens No. 2-872.50 with two Pens No. 3-870.00.



RND A rich adaptation of Brown Oxide with same plate and raised top pieces. Size 6"x12". With two Pens No. 1-535.00, with two Pens No. 2-537.50, with two Pens No. 3-538.00.

NNL Our finest Black Glass base with brushed bronze continuous-calender and double bar pencil groove. Size 6"x12"x2 1/2". With two Pens No. 1-539.00, with two Pens No. 2-537.50, with two Pens No. 3-525.00.

NNK Continuous brushed aluminum and light bronze finish base with double bar pencil groove. Size 7"x10". With two Pens No. 1-539.00, with two Pens No. 2-537.50, with two Pens No. 3-525.00.

LLW Fluorescent dark lamp or 60-watt incandescent lamp & double brush and bronze trimmings. Size 7 1/2"x10 1/2"x12". With two Pens No. 1-527.50, with two Pens No. 2-525.00, with two Pens No. 3-522.50.

NNI Our finest Polished Glass base with same plate and triangular top pieces. Size 6"x12". With two Pens No. 1-539.00, with two Pens No. 2-527.50, with two Pens No. 3-525.00.

NNY Continuous Polished Oxide with double bar pencil groove and triangular top pieces. Size 7"x10". With two Pens No. 1-525.00, with two Pens No. 2-522.50, with two Pens No. 3-520.00.



NNI



NNE



NNW



NNA



NNT



NNW

NNI Beautiful Brown Oxyd base with name plate and separate top pieces. Size 5"x10". With two Pens No. 1-425.00, with two Pens No. 2-427.50, with two Pens No. 3-425.00

NNU Black Glass base with leathed brown contoured calendar. Size 7"x10"x2 $\frac{1}{2}$ ". With two Pens No. 1-425.00, with two Pens No. 2-422.50, with two Pens No. 3-420.00

NNT Large Black Glass base with double bar pencil groove and triangular top piece. Size 6"x12". With two Pens No. 1-425.00, with two Pens No. 2-422.50, with two Pens No. 3-420.00

NNE Handsome Brown Oxyd base with name plate and separate top pieces. Size 5"x8". With two Pens No. 1-425.00, with two Pens No. 2-422.50, with two Pens No. 3-420.00

NNA Good looking brown leather base with leathed and leather contoured calendar. Size 5 $\frac{1}{2}$ "x10 $\frac{3}{4}$ "x2 $\frac{1}{4}$ ". With two Pens No. 1-425.00, with two Pens No. 2-422.50, with two Pens No. 3-420.00

NNP Lustrous Green Oxyd base with single pencil groove. Size 5"x8". With two Pens No. 1-425.00, with two Pens No. 2-422.50, with two Pens No. 3-420.00



LLY



OL



MX



OK



NW



OOA

LLY Modern Desk Lamp in gray Crackle finish with bronze appointments. Size 3 5/8" x 12" x 13 1/2". With two Pens No. 1-422.50; with two Pens No. 2-420.00; with two Pens No. 3-417.50.

OL Selected Green Oxyc base with double bar pencil groove and triangular top piece. Size 5" x 8". With Pen No. 1-420.00; with Pen No. 2-418.75; with Pen No. 3-417.50.

MX Black Glass base with extruded pencil groove and triangular top piece. Size 5" x 10". With two Pens No. 1-422.50; with two Pens No. 2-420.00; with two Pens No. 3-417.50.

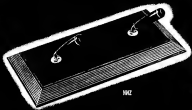
OK Selected Green Oxyc base with name plate and square top piece. Size 5" x 8". With Pen No. 1-420.00; with Pen No. 2-418.75; with Pen No. 3-417.50.

NW Black Glass base with name plate and square top piece. Size 5" x 10". With two Pens No. 1-422.50; with two Pens No. 2-420.00; with two Pens No. 3-417.50.

OOA Large Black Glass base resting on a bronze plate. Triangular top piece. Size 6 1/2" x 10". With two Pens No. 1-420.00; with two Pens No. 2-417.50; with two Pens No. 3-415.00.



00H



00Z



00D



00V



00C



00I



00W

00H Large Black Glass base resting on a bronze plate. Single extruded pencil groove. Size 4 1/2" x 10". With two Pens No. 1-820 00; with two Pens No. 2-817 50; with two Pens No. 3-815 00.

00D Selected Paduan Oxya base with single extruded pencil groove. Size 2 7/8". With two Pens No. 1-820 00; with two Pens No. 2-817 50; with two Pens No. 3-815 00.

00C Selected Paduan Oxya base with rose plate. Size 3" x 6". With two Pens No. 1-820 00; with two Pens No. 2-817 50; with two Pens No. 3-815 00.

00I Brown Oxya base with brushed bronze continuous calendar.

Size 3" x 8" x 2 1/2". With Pen No. 1-820 00; with Pen No. 2-815 75; with Pen No. 3-815 50.

00Z Brown Leather base tooled in gold. Size 5 1/2" x 10 1/2". With two Pens No. 1-820 00; with two Pens No. 2-817 50; with two Pens No. 3-815 00.

00V Beautiful Moroccan Leather base with mosaic and bronze continuous calendar. Pencil groove. Size 4 1/2" x 5 1/2" x 2 1/2". With Pen No. 1-817 50; with Pen No. 2-816 25; with Pen No. 3-815 00.

00W Italian Mobile base with brushed bronze continuous calendar. Size 3" x 5" x 2 1/2". With Pen No. 1-817 50; with Pen No. 2-816 25; with Pen No. 3-815 00.



OS



OT



OOF



OU



OR



OOH



LZ

OS Two-tone bronze base of functional design. Size 4"x6" With Pen No. 1-517.90, with Pen No. 2-516.25; with Pen No. 3-513.00

OOF Beautiful Gray English Hardwood base framed by bronze. Triangular top piece. Size 4 1/2"x10". With two Pen No. 1-517.50, with two Pen No. 2-515.00; with two Pen No. 3-512.50.

OR Brown Oxyd base with name plate and square top piece. Size 5"x6". With Pen No. 1-517.50, with Pen No. 2-516.25; with Pen No. 3-513.00.

OOH Gray English Hardwood base with large pencil scoop and extended bronze appointments. Size 5 1/2"x11 1/2". With two Pen No.

1-517.90 with two Pen No. 2-515.00; with two Pen No. 3-512.50

OT Dark Bronze base with light bronze steering. Size 4"x5 1/2" With Pen No. 1-517.50, with Pen No. 2-516.25, with Pen No. 3-513.00.

OU Brown Oxyd base with single extended pencil groove and triangular top piece. Size 3"x6". With Pen No. 1-517.50, with Pen No. 2-516.25, with Pen No. 3-513.00.

LZ Gray Crackle finish Desk Loop with bronze trimming. Size 7 1/2"x12"x11 1/2". With Pen No. 1-515.00, with Pen No. 2-513.75; with Pen No. 3-512.50.



PA



PK



OX



PD



PU



PE



PC



PI



OZ



PL

PA Italian Marble base with single pencil groove. Size 3"x8". With Pen No. 1-515.00; with Pen No. 2-515.75; with Pen No. 3-512.50.

OX Brown Onyx name plate. Size 3 1/2"x 5 1/2". With Pen No. 1-515.00; with Pen No. 2-515.75; with Pen No. 3-512.50.

PE Green Onyx name plate. Size 3 1/2"x 5 1/2". With Pen No. 1-515.00; with Pen No. 2-515.75; with Pen No. 3-512.50.

OZ Italian Marble, name plate. Size 3"x8".

With Pen No. 1-515.00; with Pen No. 2-515.75; with Pen No. 3-512.50.

PD Special Brown Onyx type base with double bar groove. Size 3 1/2"x5 1/2". With Pen No. 1-515.00; with Pen No. 2-515.75; with Pen No. 3-512.50.

PC Special Green Onyx type base with pencil groove. Size 3 1/2"x5 1/2". With Pen No. 1-515.00; with Pen No. 2-515.75; with Pen No. 3-512.50.

PK Italian Marble base with pencil groove. Size 3 1/2"x5 1/2". With Pen No. 1-512.50;

with Pen No. 2-511.25; with Pen No. 3-510.00.

PK Pedrazz Onyx base with double bar groove. Size 3 1/2"x5 1/2". With Pen No. 1-512.50; with Pen No. 2-511.25; with Pen No. 3-510.00.

PU Pedrazz Onyx base with name plate. Size 3 1/2"x5 1/2". With Pen No. 1-512.50; with Pen No. 2-511.25; with Pen No. 3-510.00.

PL Italian Marble base. Size 3 1/2"x5 1/2". With Pen No. 1-512.50; with Pen No. 2-511.25; with Pen No. 3-510.00.



PI



PZ



PV



RB



PF



SK



SH



PS



PT



RC

PI Green Onyx base. Size $3\frac{1}{2} \times 2\frac{1}{8}$ ". With Pen No. 1—\$12.50; with Pen No. 2—\$11.25; with Pen No. 3—\$10.00.

PF Green Onyx, name plate. Size $3\frac{1}{2} \times 2\frac{1}{8}$ ". With Pen No. 1—\$12.50; with Pen No. 2—\$11.25; with Pen No. 3—\$10.00.

PS Brown Onyx base. Size $3\frac{1}{2} \times 2\frac{1}{8}$ ". With Pen No. 1—\$12.50; with Pen No. 2—\$11.25; with Pen No. 3—\$10.00.

PT Brown Onyx, name plate. Size $3\frac{1}{2} \times$

$3\frac{1}{8}$ ". With Pen No. 1—\$12.50; with Pen No. 2—\$11.25; with Pen No. 3—\$10.00.

PV Italian Marble, name plate. Size $3\frac{1}{2} \times 2\frac{1}{8}$ ". With Pen No. 1—\$12.50; with Pen No. 2—\$11.25; with Pen No. 3—\$10.00.

SK Gray English Hardwood base framed by lacquer plate. With pencil groove. Size $3\frac{1}{2} \times 2\frac{1}{8}$ ". With Pen No. 1—\$10.00; with Pen No. 2—\$8.75; with Pen No. 3—\$7.50.

PZ Italian Marble base. Size $3\frac{1}{2} \times 2\frac{1}{8}$ ".

With Pen No. 1—\$10.00; with Pen No. 2—\$8.75; with Pen No. 3—\$7.50.

RB Polished bronze base with double bar pencil groove. Diameter $3\frac{1}{8}$ ". With Pen No. 1—\$10.00; with Pen No. 2—\$8.75; with Pen No. 3—\$7.50.

SH Black Glass on lacquer plate. Size $3 \times 2\frac{1}{8}$ ". With Pen No. 1—\$10.00; with Pen No. 2—\$8.75; with Pen No. 3—\$7.50.

RC Italian Marble on lacquer plate. Size $3 \times 2\frac{1}{8}$ ". With Pen No. 1—\$10.00; with Pen No. 2—\$8.75; with Pen No. 3—\$7.50.



SF



SL



PT



SR



SI



RD



RI



SC



SE

SF Black Glass base with double bar pen-ol groove. Size $3\frac{1}{2}'' \times 3\frac{1}{2}''$. With Pen No. 1—\$10.00; with Pen No. 2—\$5.75; with Pen No. 3—\$7.50.

SI Pedraza Oxy base. Size $3\frac{1}{4}'' \times 3\frac{1}{4}''$. With Pen No. 1—\$10.00; with Pen No. 2—\$5.75; with Pen No. 3—\$7.50.

SC Masons Leather base tined in gold. Size $4'' \times 4''$. With Pen No. 1—\$10.00; with Pen No. 2—\$5.75; with Pen No. 3—\$7.50.

PT Pedraza Oxy base with name plate. Size $3\frac{1}{4}'' \times 3\frac{1}{4}''$. With Pen No. 1—\$10.00; with Pen No. 2—\$5.75; with Pen No. 3—\$7.50.

RD Italian Marble base with name plate. Size $3\frac{1}{4}'' \times 3\frac{1}{4}''$. With Pen No. 1—\$10.00; with Pen No. 2—\$5.75; with Pen No. 3—\$7.50.

SE Black Glass base with name plate. Size $3\frac{1}{2}'' \times 3\frac{1}{2}''$. With Pen No. 1—\$10.00; with Pen No. 2—\$5.75; with Pen No. 3—\$7.50.

SL Black Glass base. Size $3\frac{1}{2}'' \times 3\frac{1}{2}''$. With Pen No. 1—\$10.00; with Pen No. 2—\$5.75; with Pen No. 3—\$7.50.

SR Pedraza Oxy base framed by bronze plate. Size $3'' \times 4''$. With Pen No. 1—\$10.00; with Pen No. 2—\$5.75; with Pen No. 3—\$7.50.

RI Pedraza Oxy base. Size $3\frac{1}{2}'' \times 3\frac{1}{2}''$. With Pen No. 2—\$7.50; with Pen No. 1—\$10.00.



RK



SP



ST



SI



RX



RH



RL



SV



RU

RK Gray Wood top piece framed by brass plate. Size $3\frac{1}{2} \times 5\frac{1}{4}$ ". With Pen No. 2-37-50; with Pen No. 1-410-00.

ST Black Glass base, square top piece. Size $3\frac{1}{2} \times 5\frac{1}{4}$ ". With Pen No. 2-47-50; with Pen No. 1-410-00.

SP Gray Wood base framed by metal plate. Size 3×4 ". With Pen No. 2-47-50; with Pen No. 1-410-00.

SI Pebbles Oxyg base. Size 3×4 ". With Pen No. 2-47-50; with Pen No. 1-410-00.

RH Black Glass base framed by brass plate. Size 3×4 ". With Pen No. 2-47-50; with Pen No. 1-410-00.

RX Brown Bakelite Memo base complete with paper. Size $3\frac{1}{2} \times 5\frac{1}{4}$ ". With Pen No. 2-47-50; with Pen No. 1-410-00.

RL Black Glass base. Size $3\frac{1}{2} \times 5\frac{1}{4}$ ". With Pen No. 2-47-50; with Pen No. 1-410-00.

SV Gem Stone base framed by brass plate. Size 3×4 ". With Pen No. 2-47-50; with Pen No. 1-410-00.

RU Pebbles Oxyg base. Size 3×4 ". With Pen No. 2-47-50; with Pen No. 1-410-00.

DESK SET Index



Model No.	Price	Model No.	Price
MAH		PA	30
CCV	25	PC	30
CCW	25	PD	30
CCX	25	PE	30
CCY	24	PF	31
ILLU	24	PI	31
HW	25	PK	30
HA	25	PL	30
ILY	25	PS	31
LZ	29	PT	31
NNA	26	PU	30
NNC	24	PV	31
NND	25	PA	30
NNL	24	PI	32
NNE	24	PJ	30
NNH	24	PK	31
NNI	25	RL	31
NNK	25	RC	31
NNL	25	RD	32
NNP	25	RE	31
NNR	25	RF	31
NNI	25	RG	32
NNJ	25	RH	32
NNK	25	RI	32
NNL	25	RJ	32
NNM	27	RK	32
NNN	27	RL	32
NNO	27	RM	32
NNP	27	RN	32
NNQ	27	RO	32
NNR	27	RP	32
NNS	27	RQ	32
NNT	27	RS	32
NNU	27	RT	32
NNV	27	RU	32
NNW	27	RV	32
NNX	27	RA	32
NNY	27	RB	32
OH	25	RC	32
OK	27	RD	32
OL	27	RE	32
OOA	27	RF	32
OGB	25	RG	32
OOC	25	RH	32
OOD	25	RI	32
OOF	25	RJ	32
OOF	25	RK	32
OOF	25	RL	32
OOF	25	RM	32
OR	29	RN	32
OS	29	RO	32
OT	29	RP	32
OU	29	RS	32
OV	29	RA	32
OW	29	RB	32
OX	30	RC	32
OZ	30	RD	32

RW Green Pebble Grain Leather base tooled in gold. Size 3 1/2" x 3 1/4". With Pen No. 2-45 00; with Pen No. 2-47 50, with Pen No. 1-810 00

RT Black Glass base. Size 3 1/4" x 3 1/4". With Pen No. 2-45 00, with Pen No. 2-47 50, with Pen No. 1-810 00

RP Grey Wood on bronze plate. Size 3" x 4".

With Pen No. 2-45 00, with Pen No. 2-47 50, with Pen No. 1-810 00

RY Dark Brown Leather framed by brass metal ring. Diameter 2 1/2". With Pen No. 2-45 00, with Pen No. 2-47 50, with Pen No. 1-810 00.

RF Leatherette base enrobed in gold lacquer. Inlaid and grooved. Size 3 1/4" x 3 1/4". With

Pen No. 2-45 00, with Pen No. 2-47 50, with Pen No. 1-810 00

RV Green Stone base framed by bronze plate. Size 3" x 4". With Pen No. 2-45 00, with Pen No. 2-47 50, with Pen No. 1-810 00

RS Brown Ovals base. Size 2 1/4" x 3 1/4". With Pen No. 2-45 00, with Pen No. 2-47 50, with Pen No. 1-810 00

Parker PEN COMPANY

THE OFFICIAL PEN OF THE